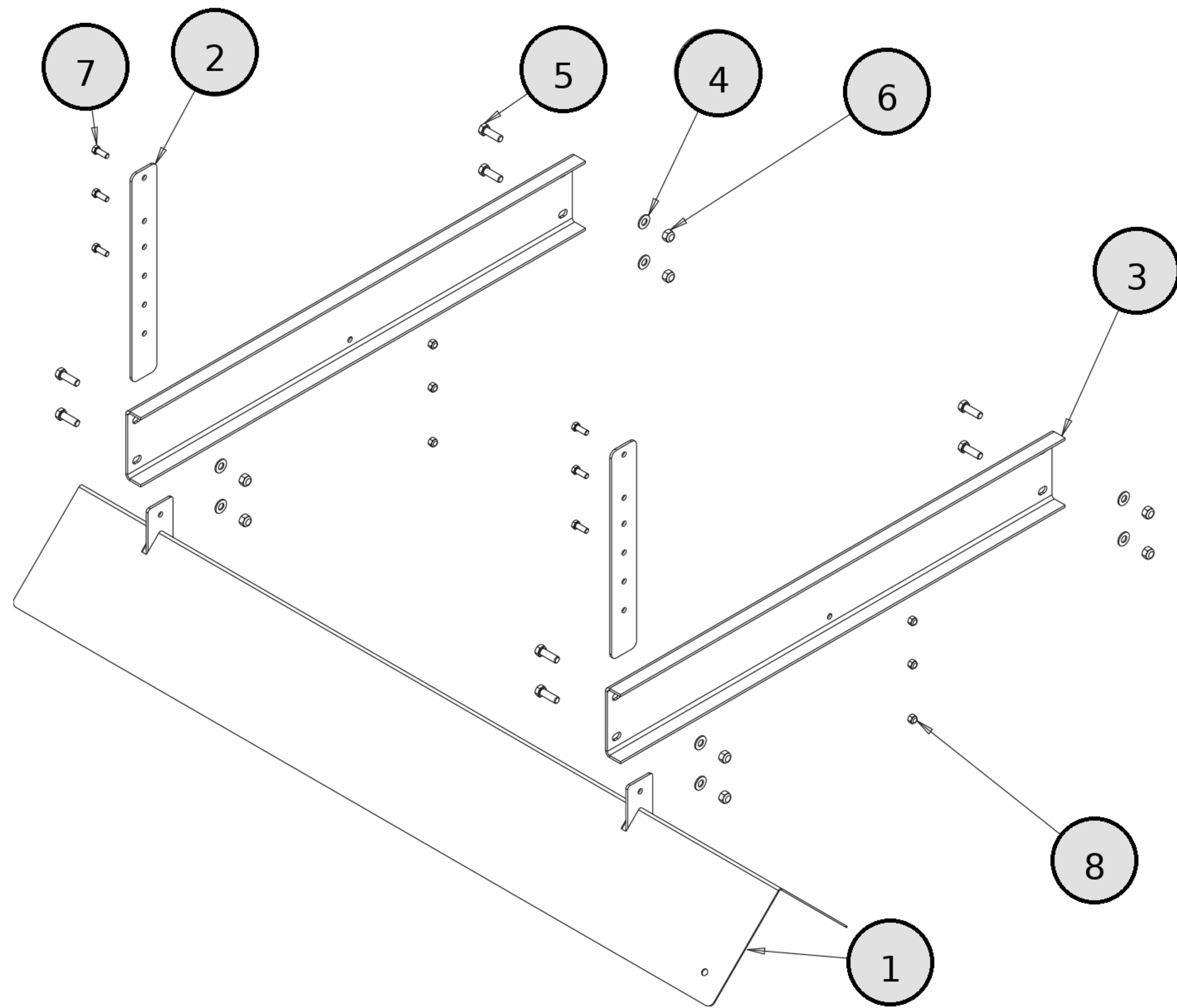




MIDSIZE SPREADERS - ELECTRIC

FIGURE LIST

Page	Description
1	14710F380211 14709F380211 14708F380211 INVERTED VEE
2	14710F387211 14710F380211 14709F387211 14709F380211 14708F387211 14708F380211 LOW PROFILE SCREEN KITS
3	14710F520211 14710F460211 14710F380211 14709F520211 14709F460211 14709F380211 14708F460211 14708F380211 HOPPER ASSEMBLY
5	14710F527211 14710F520211 14710F467211 14710F460211 14709F527211 14709F520211 14709F467211 14709F460211 14708F467211 14708F460211 SCREEN KITS
6	14710F527211 14710F467211 14710F387211 14709F467211 14709F387211 14708F467211 14708F387211 HOPPER ASSEMBLY
7	14710F527211 14710F520211 14710F467211 14710F460211 14710F387211 14710F380211 14709F527211 14709F520211 14709F467211 14709F460211 14709F387211 14709F380211 14708F467211 14708F460211 14708F387211 14708F380211 CHUTE ATTACHMENT HARDWARE
8	14710F527211 14710F520211 14710F467211 14710F460211 14709F527211 14709F520211 14709F467211 14709F460211 14708F467211 14708F460211 INVERTED VEE
9	14710F527211 14710F520211 14710F467211 14710F460211 14710F387211 14710F380211 14709F527211 14709F520211 14709F467211 14709F460211 14709F387211 14709F380211 14708F467211 14708F460211 14708F387211 14708F380211 ELECTRIC CHUTE ASSEMBLY
10	14710F527211 14710F520211 14710F467211 14710F460211 14710F387211 14710F380211 14709F527211 14709F520211 14709F467211 14709F460211 14709F387211 14709F380211 14708F467211 14708F460211 14708F387211 14708F380211 CONTROL HARNESSSES



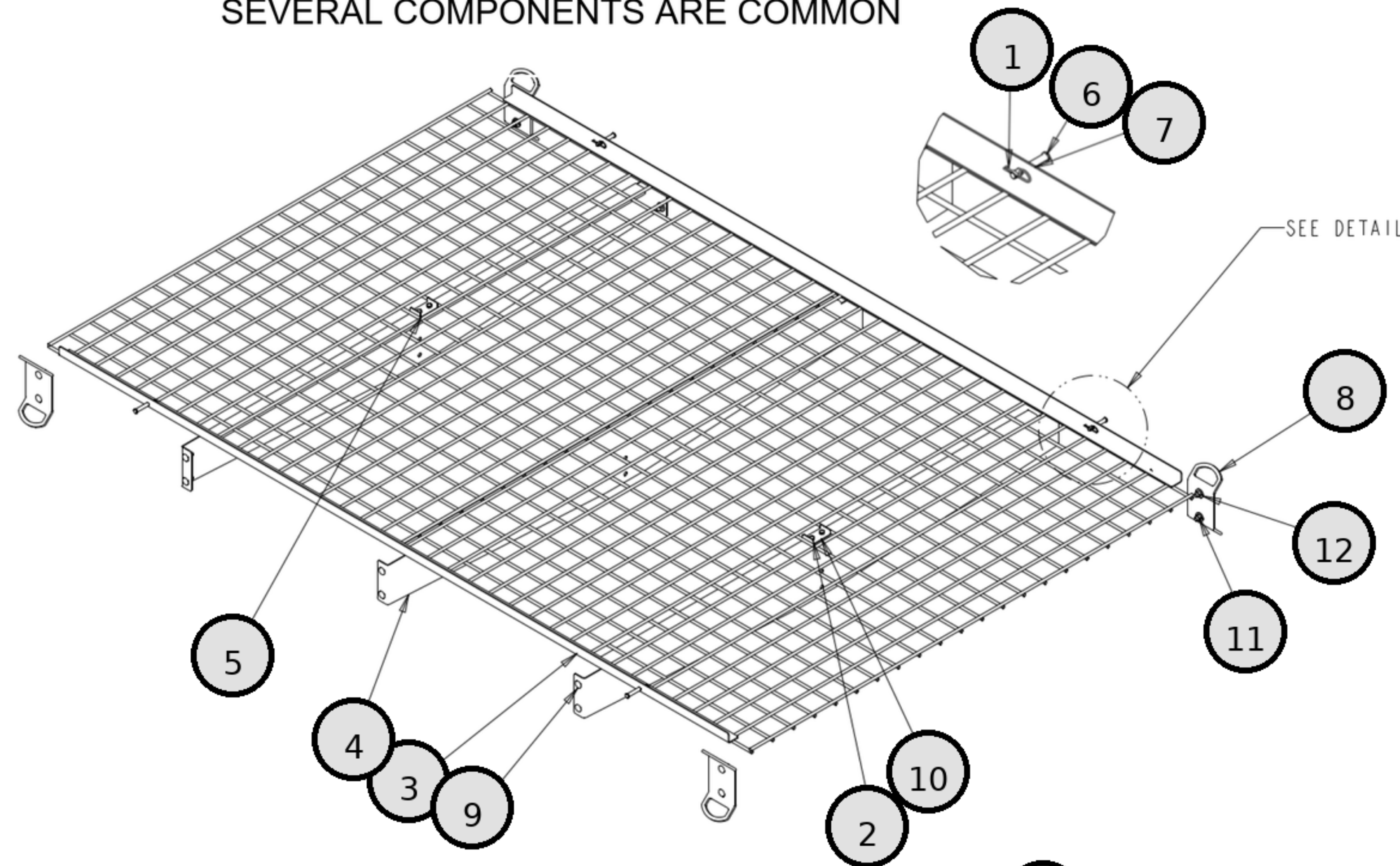
REF	PN	DESCRIPTION
1	3025254	INVERTED VEE,WELDMENT 10FT
1	3028141	INVERTED VEE,WELDMENT 9FT
2	3030225	BAR, INVERTED VEE
3	3049463	CROSS MEMBER, 38IN HOPPER
4	3003873	WASHER, FLAT 1/2" SAE TYPE A SST
5	3006723	SCREW, HEX HD 1/2-13X1.5 GR5 SS
6	FNE050013053SS	NUT, NYLOCK 1/2-13 SS
7	FCS038016100SS	SCREW, HHC 3/8-16 X 1 304 SST
8	FNE038016044SS	NUT, NYLOCK 3/8-16 X 7/16 SST

INVERTED VEE

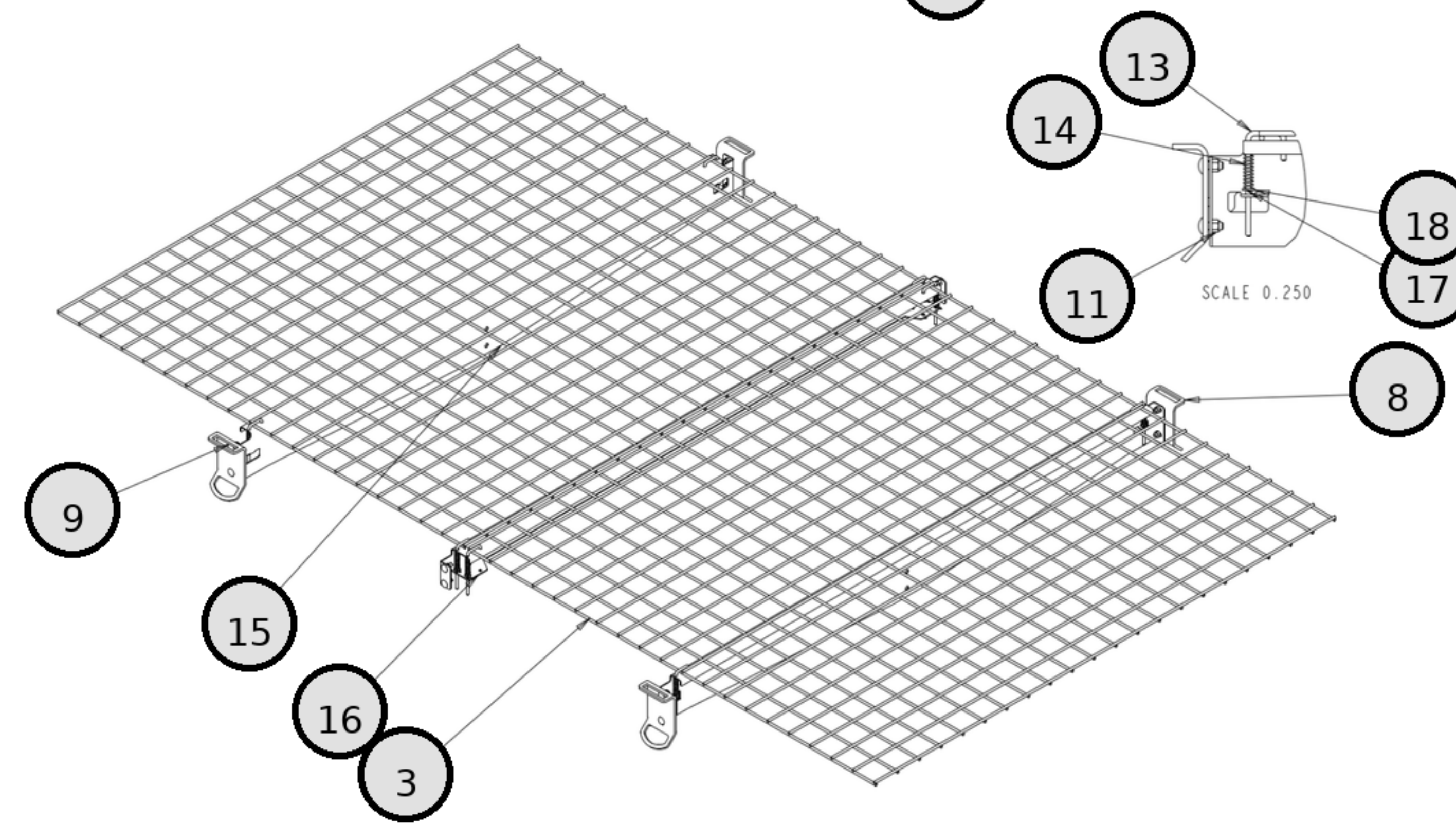
14710F380211 / 14709F380211 / 14708F380211

NOTE: COMPLETE SCREEN KITS ARE NOT BACKWARDS COMPATIBLE
SEVERAL COMPONENTS ARE COMMON

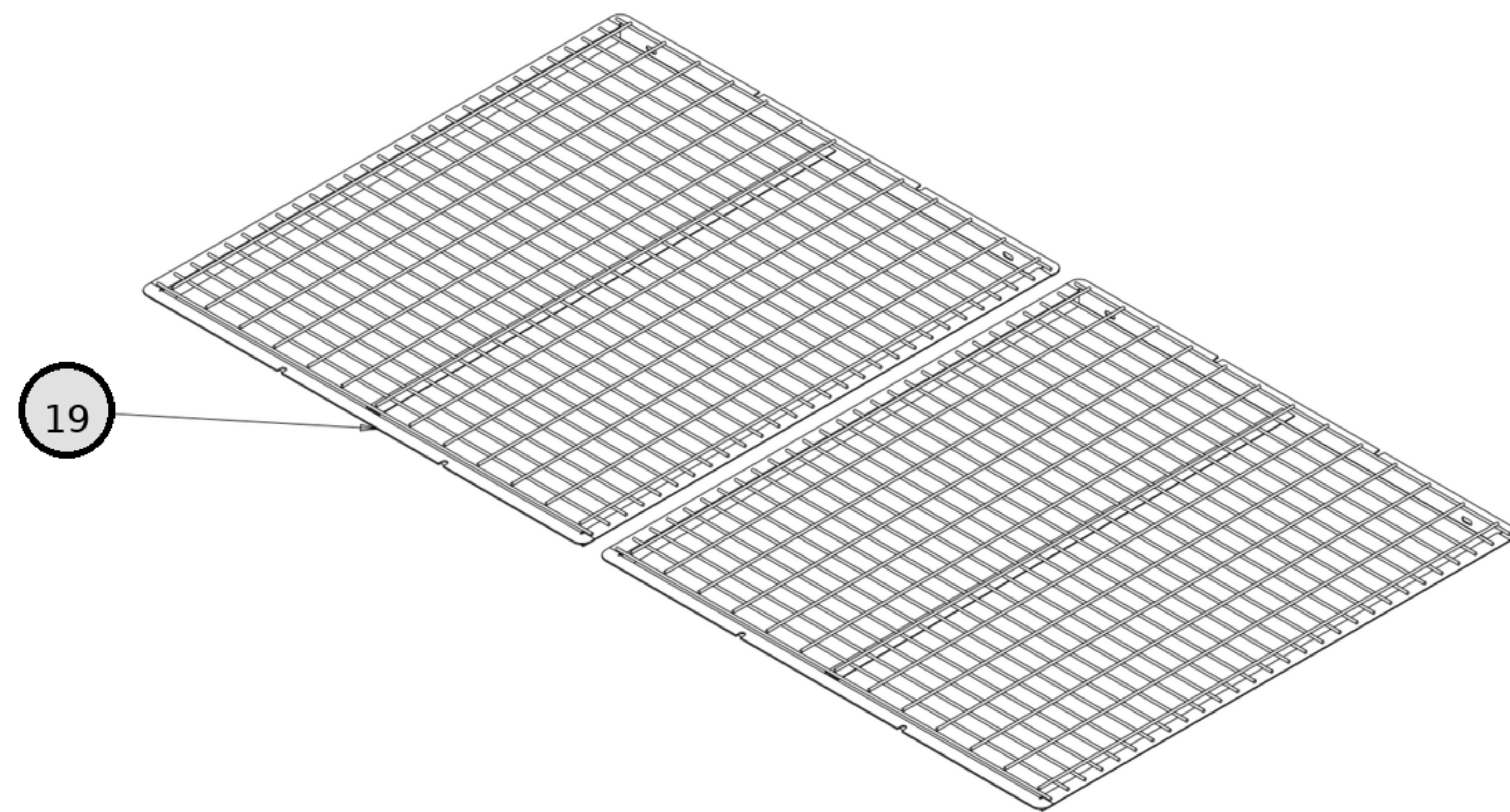
2025 DESIGN
RECESSED SCREEN



2022 DESIGN
FLUSH SCREEN



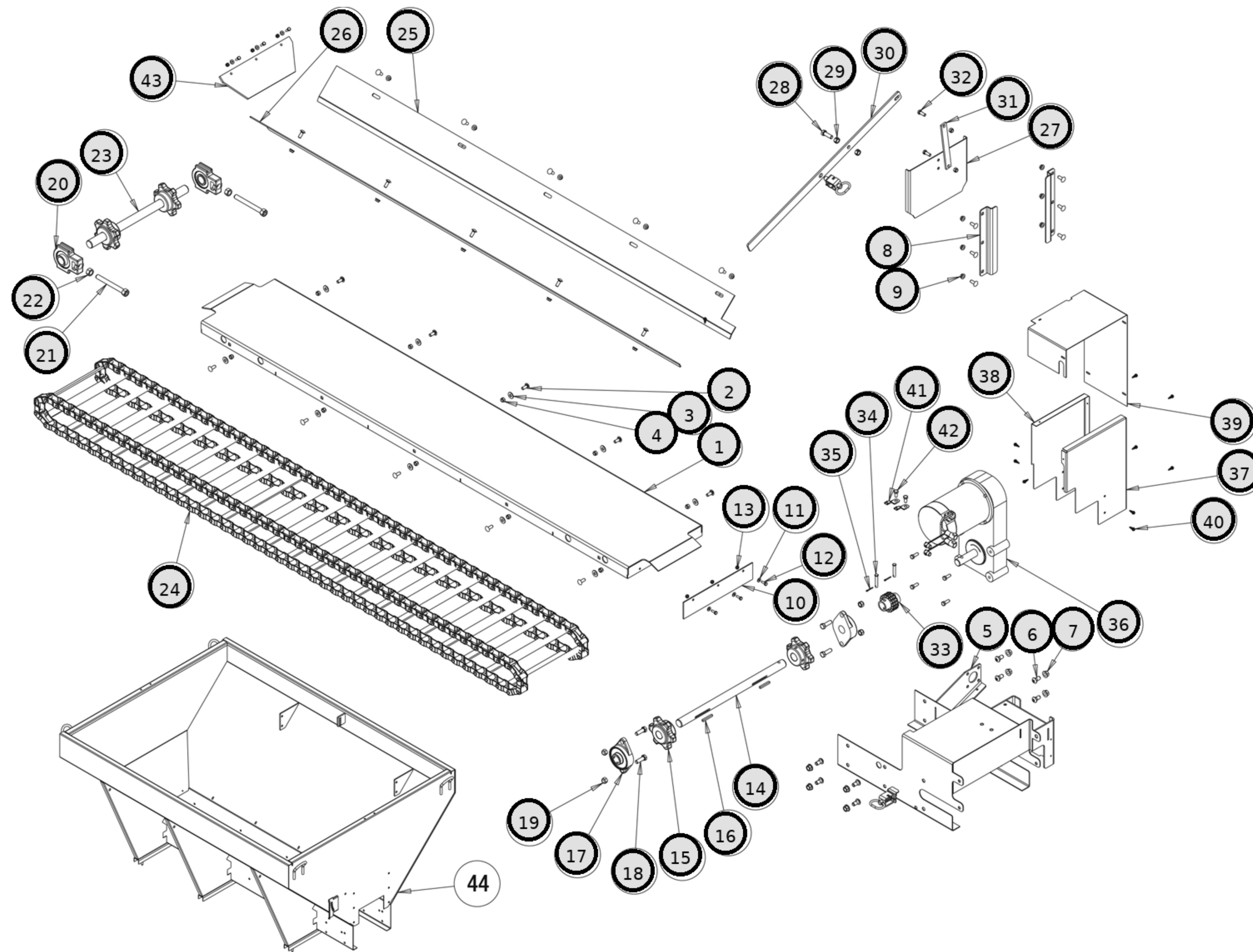
2020 DESIGN
FRAMED SCREEN



REF	PN	DESCRIPTION
1	3001257	HAIR PIN, SST
2	3018701	SCREW, HEX HD, 5/16-18 X 1 SST
3	3056169	WIRE MESH, 8FT (2 PER)
3	3056169	WIRE MESH, 8FT (2 PER)
3	3056177	WIRE MESH, 9FT (2 PER)
3	3056177	WIRE MESH, 9FT (2 PER)
3	3056182	WIRE MESH, 10FT (2 PER)
3	3056182	WIRE MESH, 10FT (2 PER)
4	3063159	CROSS MEMBER, SST, MIDSIZE 46/52
5	3063257	SCREEN LOCATER
6	3063685	CLEVIS PIN, .375X2-1/8 SST
7	3063161	CLAMP, SCREEN, 10FT (2 PER)
7	3063965	CLAMP, SCREEN, 9FT (2 PER)
7	3064265	CLAMP, SCREEN, 8FT (2 PER)
8	3064579	BRACKET, TIE-DOWN, MIDSIZE
8	3064579	BRACKET, TIE-DOWN, MIDSIZE
9	FCB037516100SS	CARRIAGE BOLT, 3/8-16X1 SST
9	FCB037516100SS	CARRIAGE BOLT, 3/8-16X1 SST
10	FNE031018034SS	NYLOCK NUT, 5/16-18 SST WAXED
11	FNE038016044SS	NYLOCK NUT, 3/8-16 SST WAXED
11	FNE038016044SS	NYLOCK NUT, 3/8-16 SST WAXED
12	FWF038100007SS	FLAT WASHER, 3/8 SST
13	3054283	LOCK PIN
14	3054284	LOCK PIN SPRING
15	3056168	CROSS MEMBER, ENDS
16	3056167	CROSS MEMBER, MIDDLE
17	FPC009000075SS	COTTER PIN, 3/32X3/4 SST
18	FWF025063007SS	FLAT WASHER, 1/4 SST
19	3025436	SCREEN, 10FT (2 PER)
19	3028143	SCREEN, 9FT (2 PER)
19	3028154	SCREEN, 8FT (2 PER)

LOW PROFILE SCREEN KITS

14710F387211 / 14710F380211 / 14709F387211 / 14709F380211 / 14708F387211 / 14708F380211

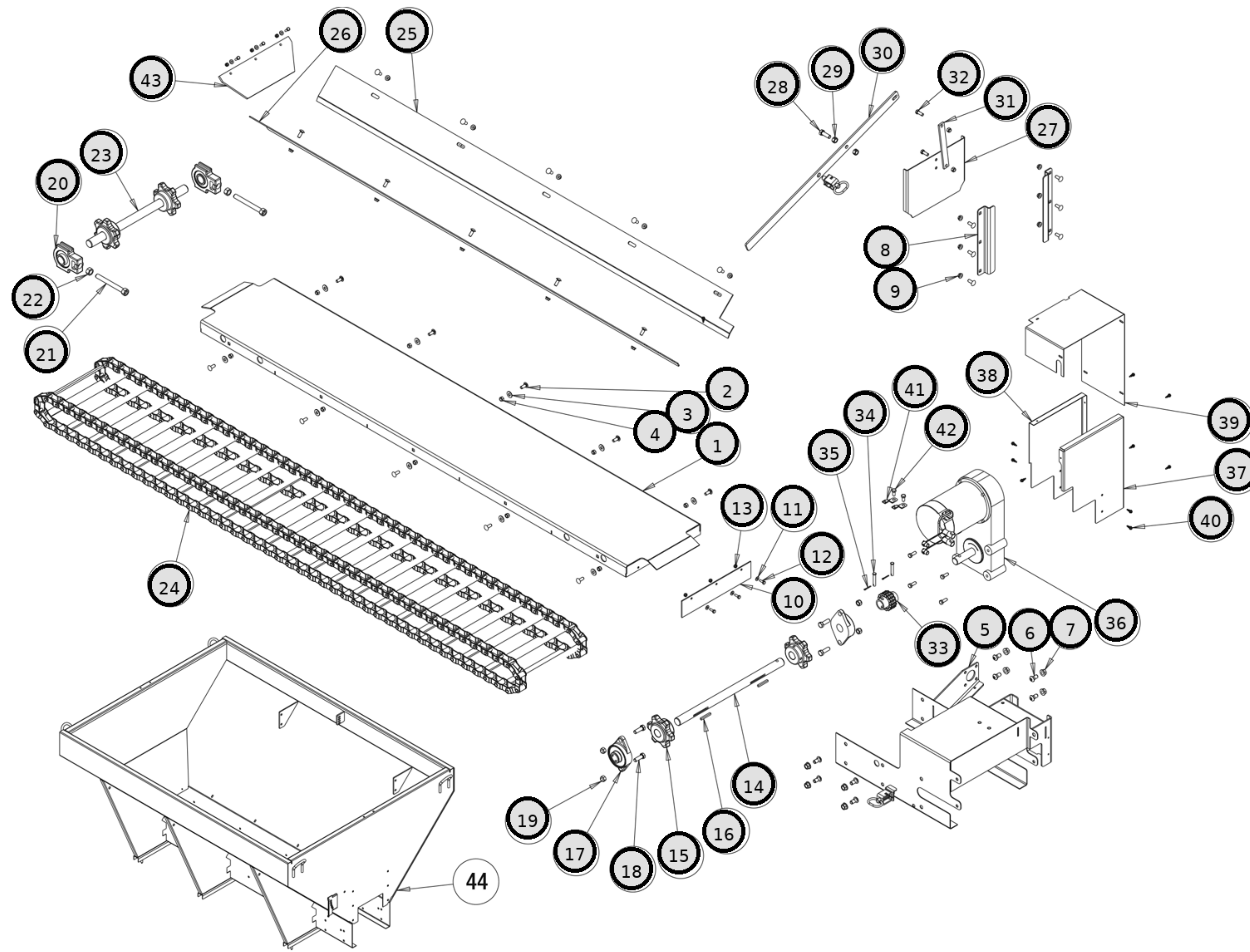


REF	PN	DESCRIPTION
1	3049336	FLOOR WELDMENT, 8FT
1	3050127	FLOOR WELDMENT, 9FT
1	3050400	FLOOR WELDMENT, 10FT
2	3014960	BOLT, 3/8-16 X 1 CARRIAGE SHORT NECK SST
3	FWF038100007SS	WASHER, FLAT 3/8 USS SST
4	FNE038016044SS	NUT, NYLOCK 3/8-16 X 7/16 SST
5	3025245	MOTOR DECK, WELDMENT
6	3004278	SCREW, BTN HD SOC CAP 1/2-13X 1 SST
7	3001523	NUT, HX FLNG-1/2-13 SST
8	3049252	GUIDE FEEDGATE
9	3001255	NUT, HEX FLNG-3/8-16 SST
10	3008872	WIPER BELT, HOPPER
11	FWF025063007SS	WASHER, FLAT 1/4 SAE SS
12	FCS025020075SS	SCREW, CAP 1/4-20 X 3/4 SST
13	FNE025020031SS	NUT, NYLOCK, 1/4-20, GR A, SST
14-19 33-35	3053123	DRIVE SHAFT SERVICE KIT, MIDSIZE
14	3008316	SHAFT, SPROCKET DRIVE END
15	3008300	SPROCKET, D667H CHAIN
16	KS402	KEY, 1/4 X 1/4 X 2
17	3008294	BEARING, FLANGED
18	3006723	SCREW, HEX HD 1/2-13X1.5 GR5 SS
19	FNE050013053SS	NUT, NYLOCK 1/2-13 SS
20	3008290	BEARING, HEAVY DUTY TAKE-UP
21	141050WSS	BOLT, WELDED TAKE UP, SCH IDLER
22	FNH063011054SS	NUT, HH 5/8-11 X 17/32 HIGH SST
23	3008317	SHAFT, IDLER SPROCKET
24	3008860	CHAIN, D667H CONVEYOR, 9FT
24	3009114	CHAIN, D667H CONVEYOR, 10FT
24	3014539	CHAIN, D667H CONVEYOR, 8FT
25	3049257	SHIELD, CHAIN, PS, 8FT
25	3050130	SHIELD, CHAIN, PS, 9FT
25	3050396	SHIELD, CHAIN, PS, 10FT
26	3049353	SHIELD, CHAIN, DS, 8FT
26	3050129	SHIELD, CHAIN, DS, 9FT
26	3050397	SHIELD, CHAIN, DS, 10FT
27	3008338	DOOR, SALT GATE
28	FCS050013150SS	SCREW, HHC-1/2-13 X 1.50 SST
29	3003874	NUT, HEX REVERSABLE LOCK 1/2-13 SST
30	3011832	LEVER, WELDED, FEED GATE
31	3008339	BAR, FEED GATE DOOR
32	FCS038016100SS	SCREW, HHC 3/8-16 X 1 304 SST
33	3008289	COUPLING, DRIVE SHAFT/ GEARBOX
34	1410803	PIN, CLEVIS, 3/8 X 2, 1038 ST, YZN
35	FPC013000100	COTTER PIN, 1/8 X 1, ZINC
36	3024575	GEAR MOTOR CONVEYOR 12 VDC
37	3026363	SIDE PANEL, MOTOR COVER
38	3031479	SIDE PANEL INNER
39	3026362	COVER, GEAR MOTOR
40	3015873	SCREW #12-14X.74 SS SELF DRIL HEX WASHER HD

HOPPER ASSEMBLY

14710F520211 / 14710F460211 / 14710F380211 / 14709F520211 / 14709F460211 / 14709F380211 / 14708F460211 / 14708F380211

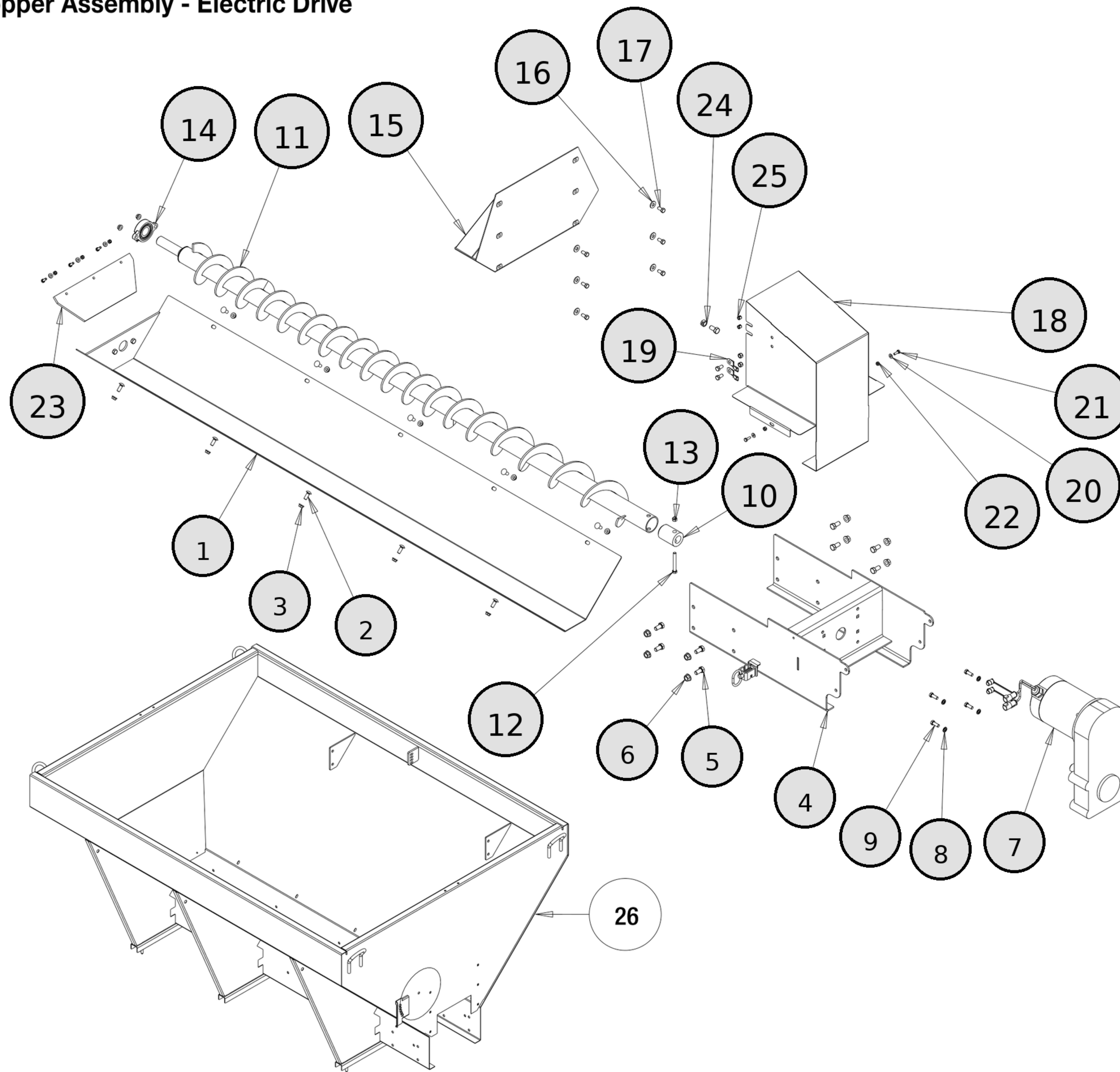
REF	PN	DESCRIPTION
41	3017121	BRACKET, RECEPTACLE SZ8 DEUTSCH
42	FCS038016075SS	SCREW, HHC-3/8-16 X 3/4 SST
43	3050273	WIPER BELT, FRONT, MID SIZE



HOPPER ASSEMBLY

14710F520211 / 14710F460211 / 14710F380211 / 14709F520211 / 14709F460211 / 14709F380211 / 14708F460211 / 14708F380211

Hopper Assembly - Electric Drive



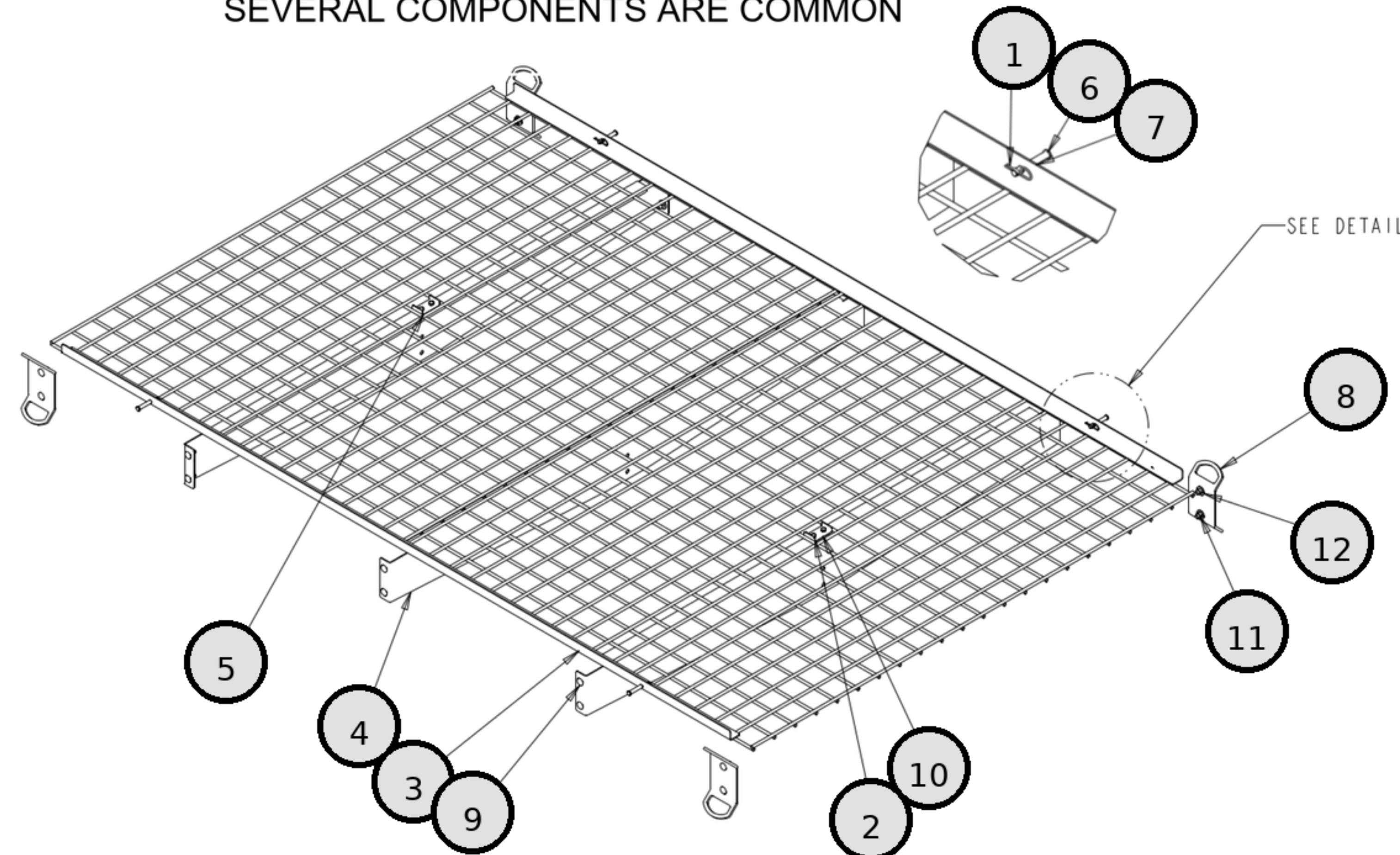
REF	PN	DESCRIPTION
1	3049358	TROUGH WELDMENT 8FT
1	3050287	TROUGH WELDMENT 9FT
1	3050423	TROUGH WELDMENT 10FT
2	3014960	BOLT, 3/8-16 X 1 CARRIAGE SHORT NECK SST
3	3001255	NUT, HEX FLNG-3/8-16 SST
4	3049359	MOTOR MOUNT WELDMENT
5	FCS050013100SS	SCREW, HHC-1/2-13 X 1 SST
6	3001523	NUT, HX FLNG-1/2-13 SST
7	3024575	GEAR MOTOR CONVEYOR 12 VDC
8	FWL038069009SS	WASHER, LOCK RHS-3/8 SST
9	FCS038016100SS	SCREW, HHC 3/8-16 X 1 304 SST
10	3033663	SLEEVE, AUGER ADAPTER
11	3033660	AUGER 5.25 VARIABLE, 8FT
11	3037473	AUGER 5.25 VARIABLE, 10FT
11	3050289	AUGER 5.25 VARIABLE, 9FT
12	3007068	CAP SCREW, HX HD-3/8-16X3 SST
13	FNE038016044SS	NUT, NYLOCK 3/8-16 X 7/16 SST
14	9240086	BEARING, 1-1/4 FLANGE 2 HOLE
15	3049427	MATERIAL GUIDE WELDMENT
16	FWF038100007SS	WASHER, FLAT 3/8 USS SST
17	FCS038016075SS	SCREW, HHC-3/8-16 X 3/4 SST
18	3049428	COVER, GEAR MOTOR
19	3017121	BRACKET, RECEPTACLE SZ8 DEUTSCH
20	FWF025063007SS	WASHER, FLAT 1/4 SAE SS
21	FCS025020075SS	SCREW, CAP 1/4-20 X 3/4 SST
22	FNE025020031SS	NUT, NYLOCK, 1/4-20, GR A, SST
23	3050273	WIPER BELT, FRONT, MID SIZE
24	3003874	NUT, HEX REVERSABLE LOCK 1/2-13 SST
25	3017982	WIRE BUSHING OPEN/CLOSED HEYCO 2867

HOPPER ASSEMBLY

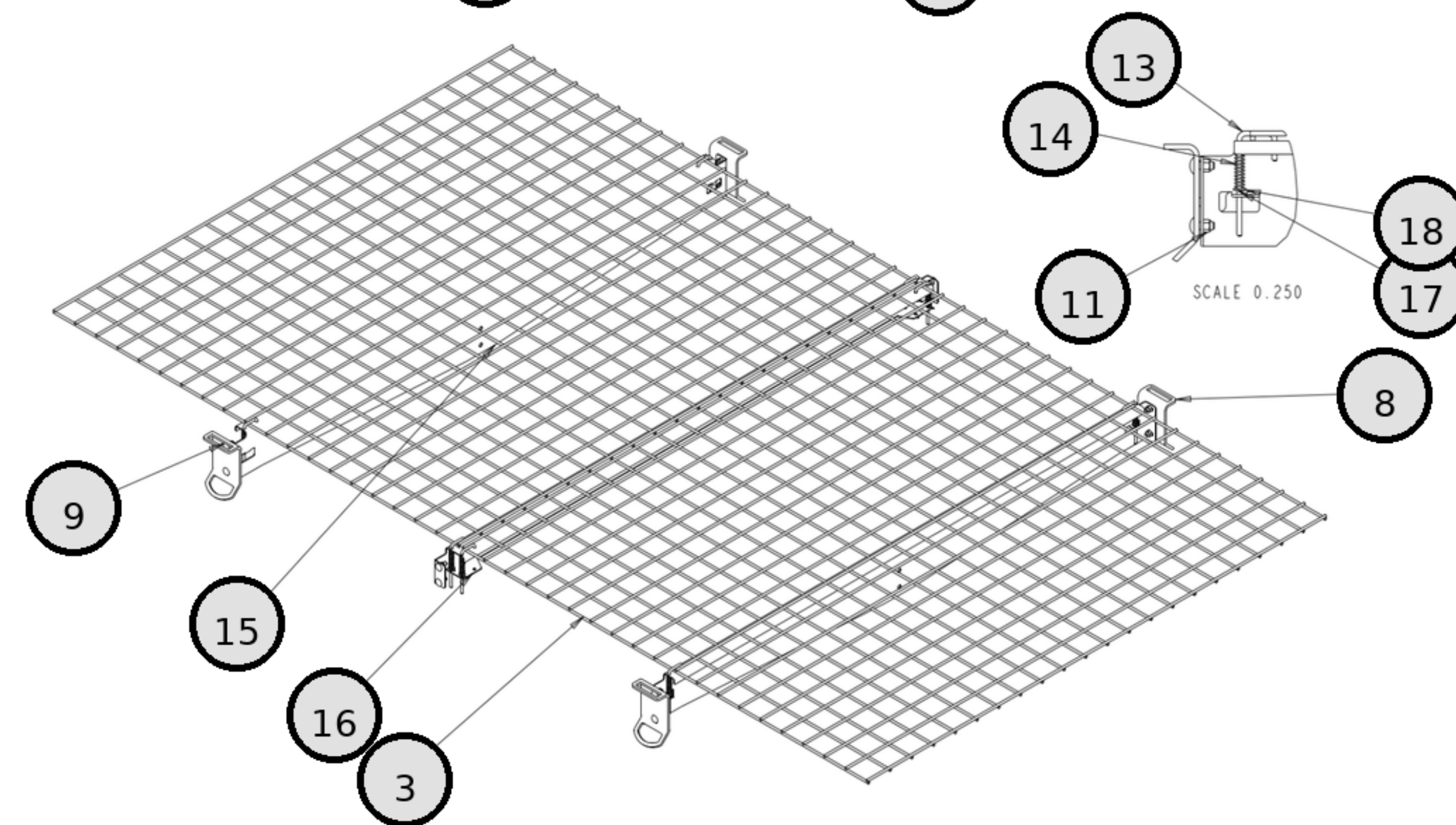
14710F527211 / 14710F467211 / 14710F387211 / 14709F467211 / 14709F387211 / 14708F467211 / 14708F387211

NOTE: COMPLETE SCREEN KITS ARE NOT BACKWARDS COMPATIBLE
SEVERAL COMPONENTS ARE COMMON

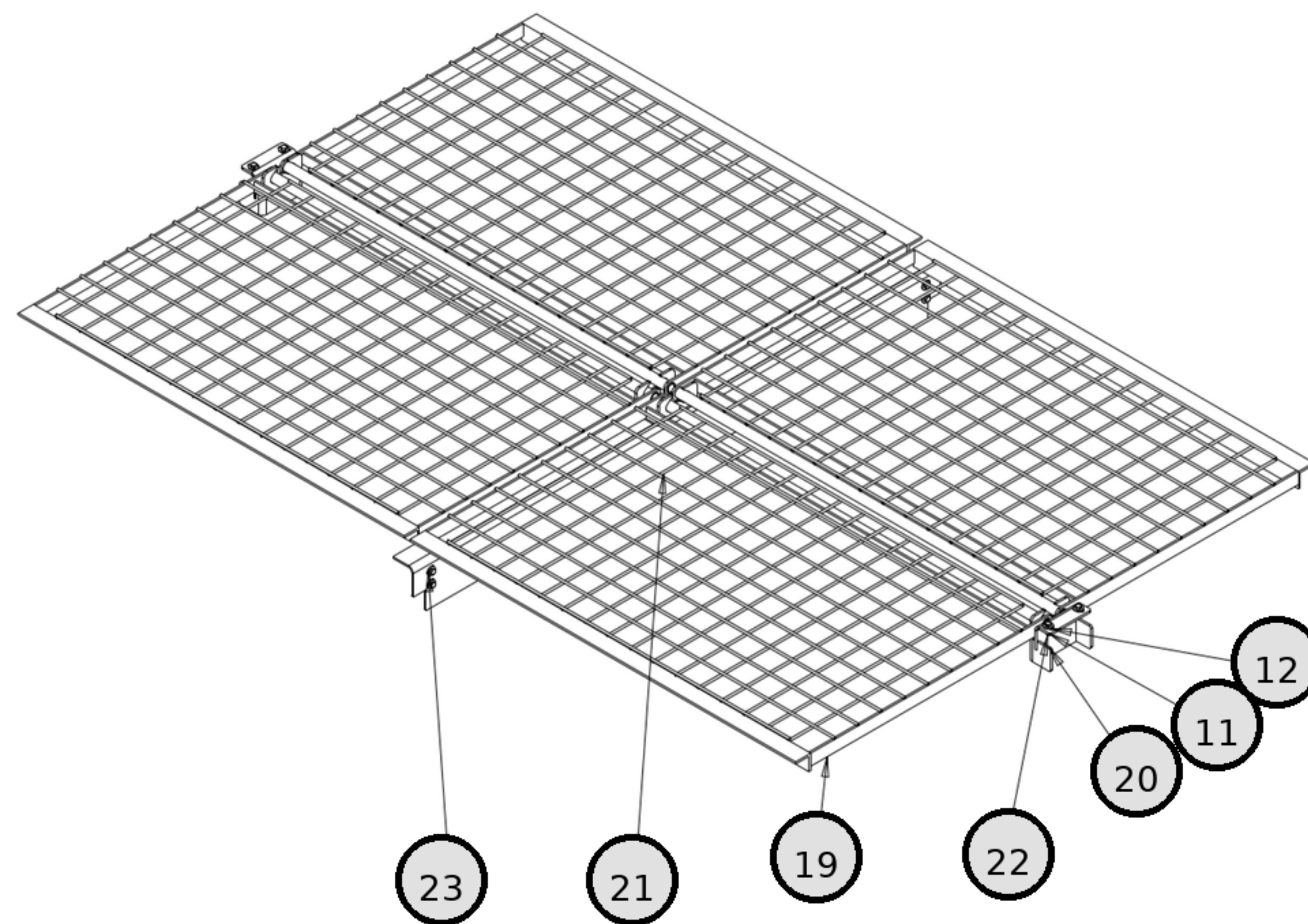
2025 DESIGN
RECESSED SCREEN



2022 DESIGN
FLUSH SCREEN



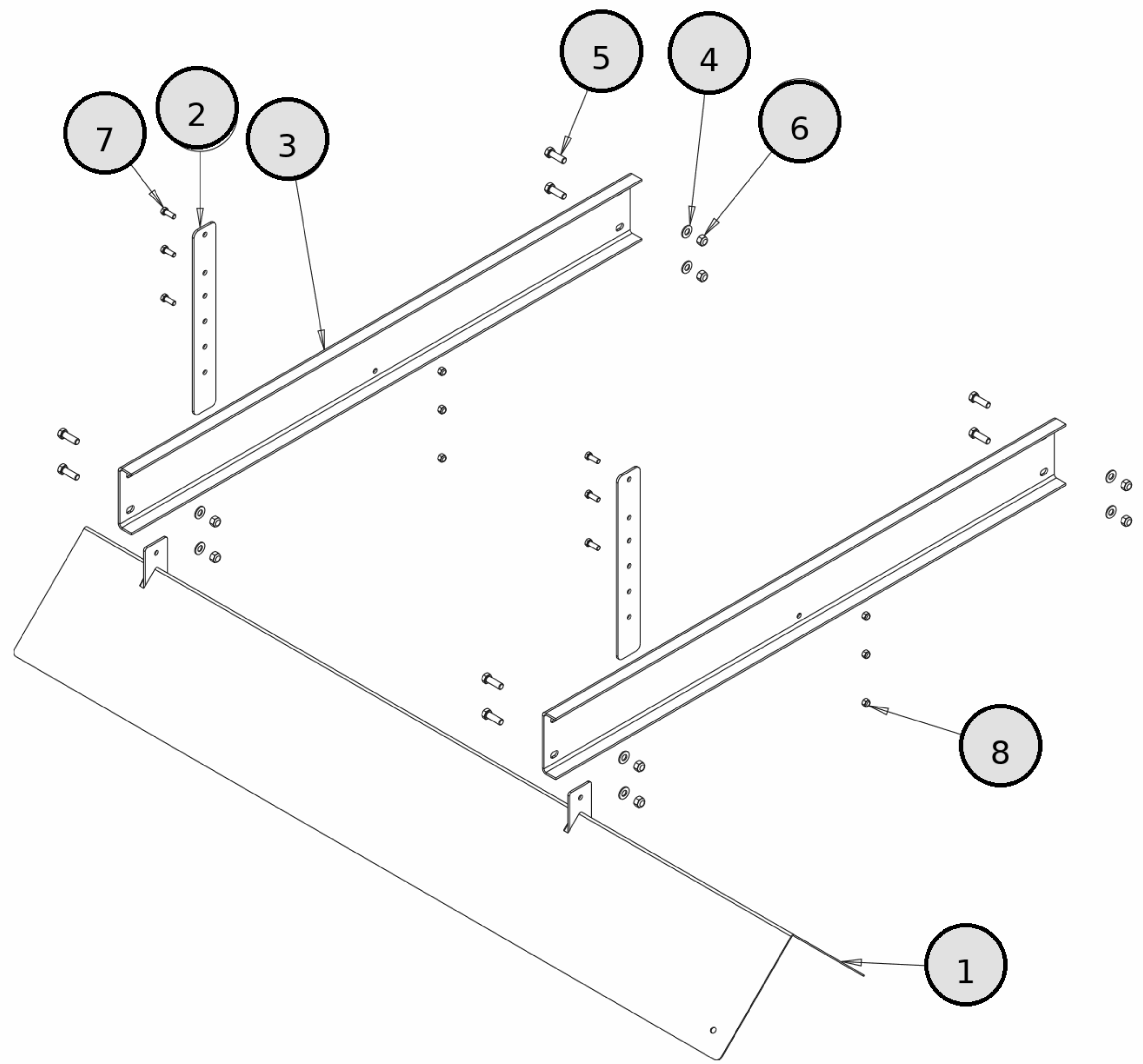
2020 DESIGN
FRAMED SCREEN



REF	PN	DESCRIPTION
1	3001257	HAIR PIN, SST
2	3018701	SCREW, HEX HD, 5/16-18 X 1 SST
3	3055355	WIRE MESH, 8FT (2 PER)
3	3055355	WIRE MESH, 8FT (2 PER)
3	3055491	WIRE MESH, 9FT (2 PER)
3	3055491	WIRE MESH, 9FT (2 PER)
3	3055498	WIRE MESH, 10FT (2 PER)
3	3055498	WIRE MESH, 10FT (2 PER)
4	3063159	CROSS MEMBER, SST, MIDSIZE 46/52
5	3063257	SCREEN LOCATER
6	3063685	CLEVIS PIN, .375X2-1/8 SST
7	3063161	CLAMP, SCREEN, 10FT (2 PER)
7	3063965	CLAMP, SCREEN, 9FT (2 PER)
7	3064265	CLAMP, SCREEN, 8FT (2 PER)
8	3064579	BRACKET, TIE-DOWN, MIDSIZE
8	3064579	BRACKET, TIE-DOWN, MIDSIZE
9	FCB037516100SS	CARRIAGE BOLT, 3/8-16X1 SST
9	FCB037516100SS	CARRIAGE BOLT, 3/8-16X1 SST
10	FNE031018034SS	NYLOCK NUT, 5/16-18 SST WAXED
11	FNE038016044SS	NYLOCK NUT, 3/8-16 SST WAXED
11	FNE038016044SS	NYLOCK NUT, 3/8-16 SST WAXED
11	FNE038016044SS	NYLOCK NUT, 3/8-16 SST WAXED
12	FWF038100007SS	FLAT WASHER, 3/8 SST
12	FWF038100007SS	FLAT WASHER, 3/8 SST
13	3054283	LOCK PIN
14	3054284	LOCK PIN SPRING
15	3055354	CROSS MEMBER, ENDS
16	3055362	CROSS MEMBER, MIDDLE
17	FPC009000075SS	COTTER PIN, 3/32X3/4 SST
18	FWF025063007SS	FLAT WASHER, 1/4 SST
19	3008352	SCREEN, 9FT (4 PER)
19	3009206	SCREEN, 10FT (4 PER)
19	3014545	SCREEN, 8FT (4 PER)
20	nan	DETENT WELDMENT
21	nan	SCREEN SUPPORT
22	FCS038016100SS	HEX HEAD SCREW, 3/8-16X1 SST
23	FCS038016125SS	HEX HEAD SCREW, 3/8-16X1-1/4 SST

SCREEN KITS

14710F527211 / 14710F520211 / 14710F467211 / 14710F460211 / 14709F527211 / 14709F520211 / 14709F467211 / 14709F460211 / 14708F467211 / 14708F460211



REF	PN	DESCRIPTION
1	3025254	INVERTED VEE,WELDMENT 10FT
1	3028141	INVERTED VEE,WELDMENT 9FT
1	3037082	INVERTED VEE,WELDMENT 8FT
2	3030225	BAR, INVERTED VEE
3	3030224	CROSS MEMBER, HOPPER
4	3003873	WASHER, FLAT 1/2 ID SST
5	3006723	SCREW, HEX HD 1/2-13X1.5 GR5 SS
6	FNE050013053SS	NUT, NYLOCK 1/2-13 SS
7	FCS038016100SS	SCREW, HHC 3/8-16 X 1 304 SST
8	FNE038016044SS	NUT, NYLOCK 3/8-16 X 7/16 SST

INVERTED VEE

14710F527211 / 14710F520211 / 14710F467211 / 14710F460211 / 14709F527211 / 14709F520211 / 14709F467211 / 14709F460211 / 14708F467211 / 14708F460211

